

InvoiceConnect for Microsoft Dynamics SL

What is InvoiceConnect?

Shouldn't technology make your life easier? If you're using SAP Concur Invoice and Microsoft Dynamics SL, you don't want to waste time downloading data from one application, manipulating it and reuploading it to the other.

Thankfully, you don't have to. InvoiceConnect integrates the two systems and eliminates manual data processes – minimizing the time it takes to complete the invoice workflow and reducing the chance of making errors.

**Streamline your approval,
payment and accounting
process with InvoiceConnect**

How does it work?

InvoiceConnect allows you to define the data mapping from Concur Invoice to SL. By providing a bi-directional connection between the two, it automatically pulls approved invoices from Concur and flows them into SL.

Ultimately, InvoiceConnect gives you a flexible, secure, cloud-based integration. You can easily maintain and synchronize vendor information, reduce the time it takes to approve and account for an invoice from a vendor, and automatically generate the appropriate documents and transactions in SL.

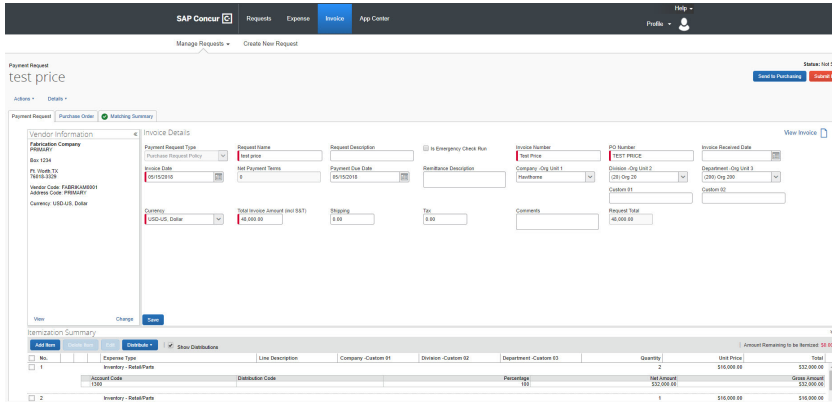
And as a prepackaged connector, InvoiceConnect gives you data-mapping control without costly custom development.

It also accommodates multi-entity deployments of SL, as well as multi-currency transactions.

WIPFLI

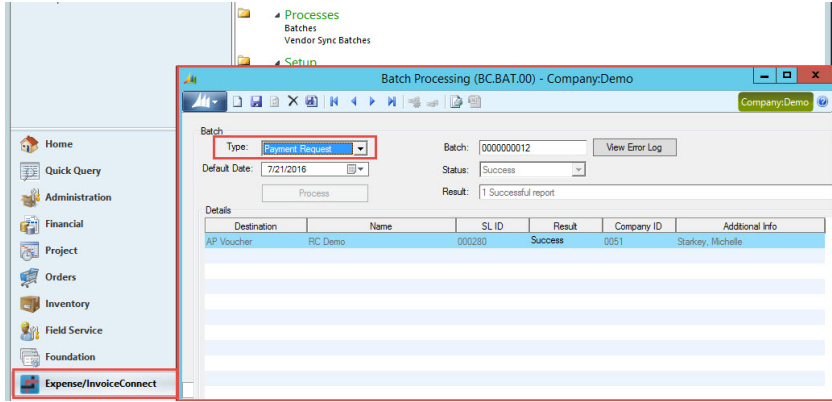
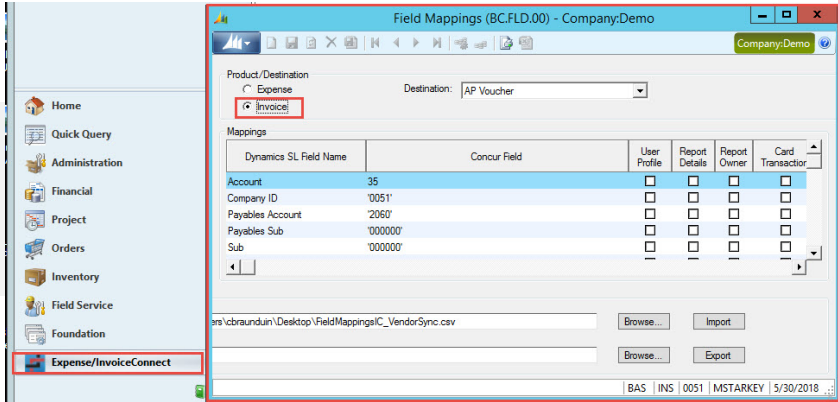
Invoice management — on your terms

With flexible data mapping between SAP Concur and Microsoft Dynamics SL, data flows between these two powerful applications the way you need it to. You gain enhanced visibility and complete control — with minimal hassle. Here's a little more info on how InvoiceConnect works:



All Integration setting and data mappings are defined within your SL environment.

Scan and route invoices for approval through Concur Invoice.



Seamless integration generates the appropriate documents and transactions within SL.

Let's get started

Contact Wipfli to learn more about InvoiceConnect and view a free demo.

wipfli.com/Concur